

IDEAL Version: ID13_0C_14

IDF

ARC8A-AA id13_0c_02

Format: LWD RT GVR SONIC Vertical Scale: 1:200

Graphics File Created: 27-Nov-2008 15:56

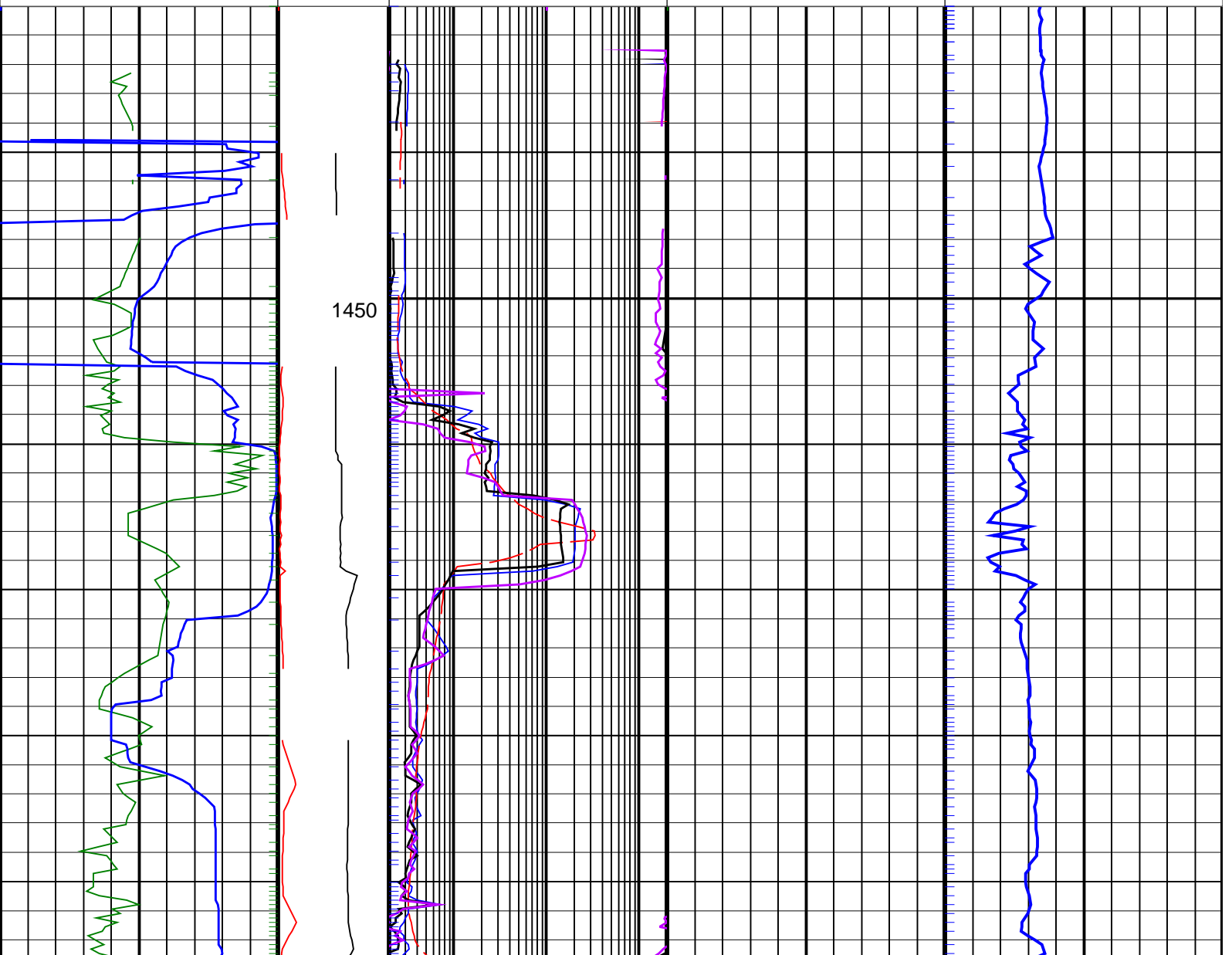
PIP SUMMARY

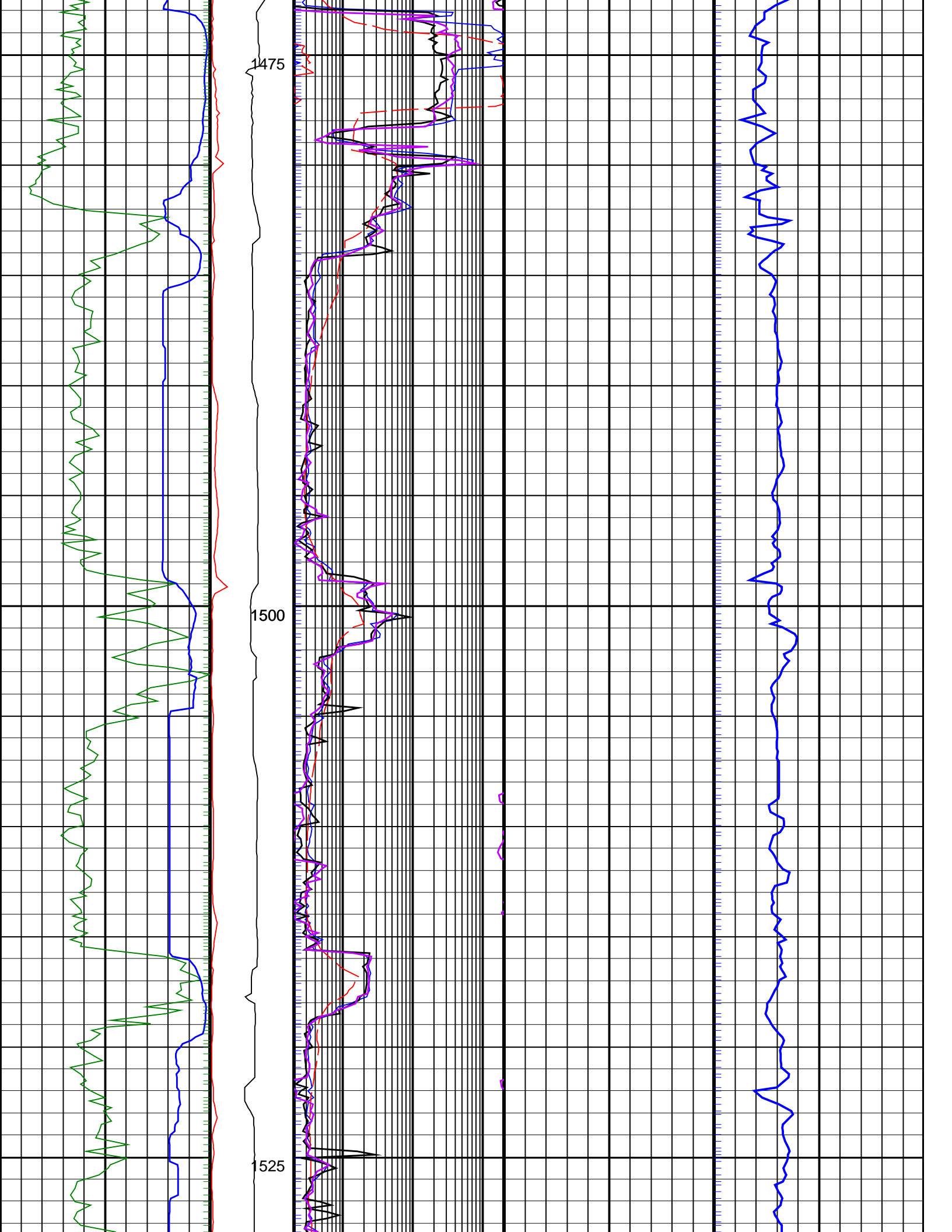
Delta-T Samples \uparrow

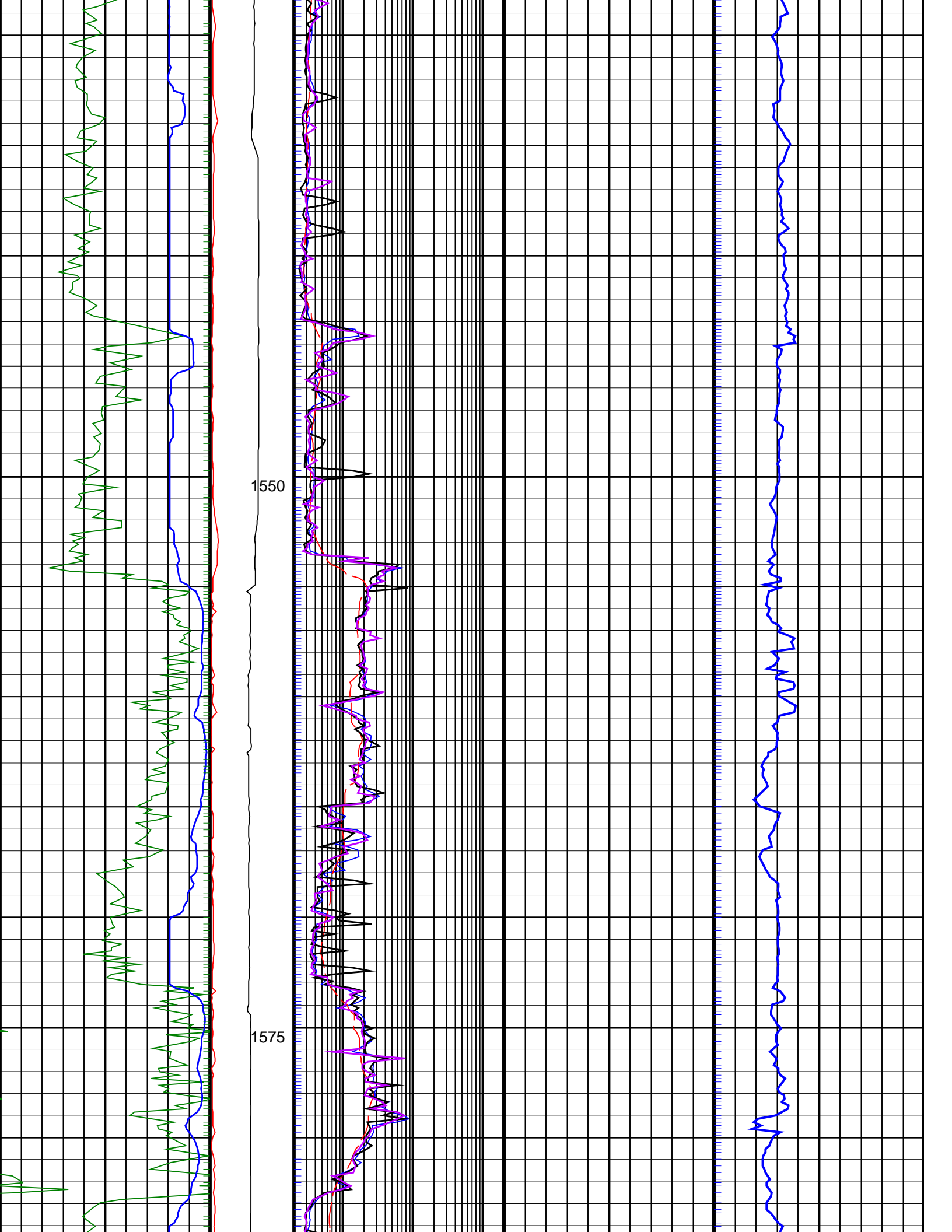
\uparrow GRRR_R PIP

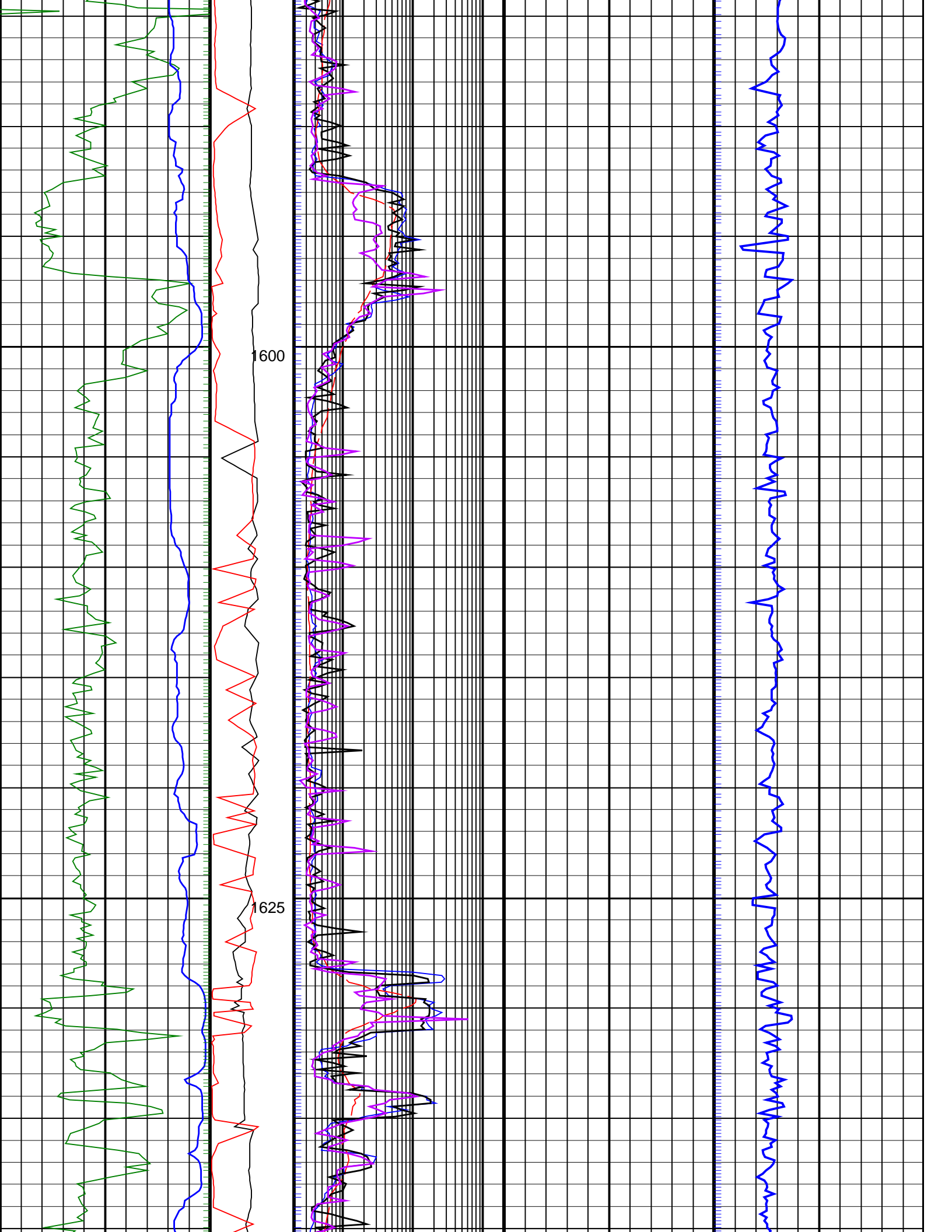
\uparrow RING_TR PIP

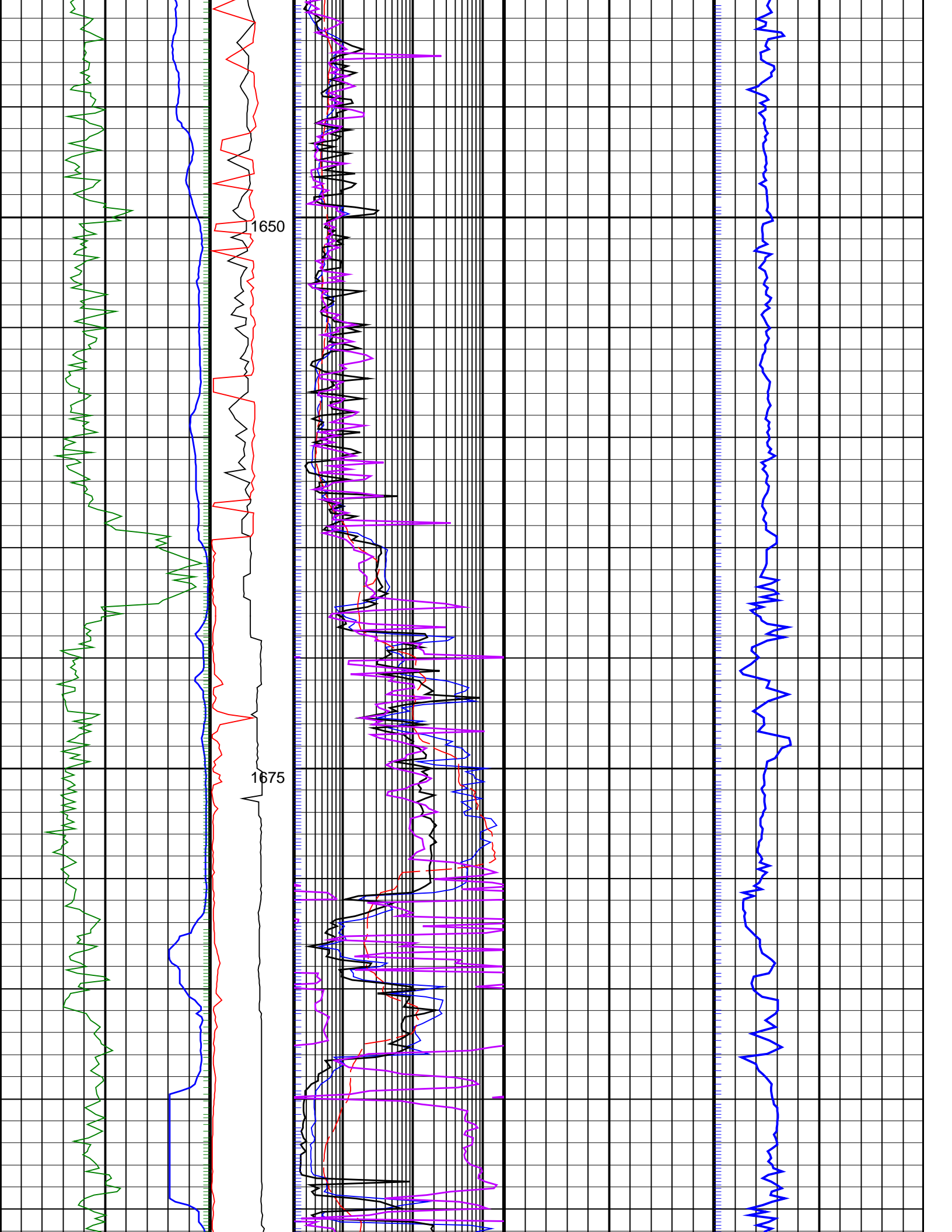
		Shallow Button Resistivity, Real-Time (RES_BS_RT)				
		0.2	(OHMM)	200		
		Deep Button Resistivity, Real-Time (RES_BD_RT)				
		0.2	(OHMM)	200		
RAB Gamma Ray, Real-Time (GR_RAB_RT)	MWD Collar RPM (CRPM_RT)	Bit Resistivity, Real-Time (RES_BIT_RT)				
0 200 (GAPI)	(RPM) 0 250	0.2	(OHMM)	200		
ROP*5 (ROP5)	PKPK_RPM (Stick_RT)	Ring Resistivity, Real-Time (RES_RING_RT)		Photoelectric Factor, Real-Time (PEF_ADN_RT)	Delta-T Compressional, Real-Time (DTCO_RT)	
200 0 (M/HR)	(RPM) 0 500	0.2	(OHMM)	200	0	(----) 10 40 240 (US/F)

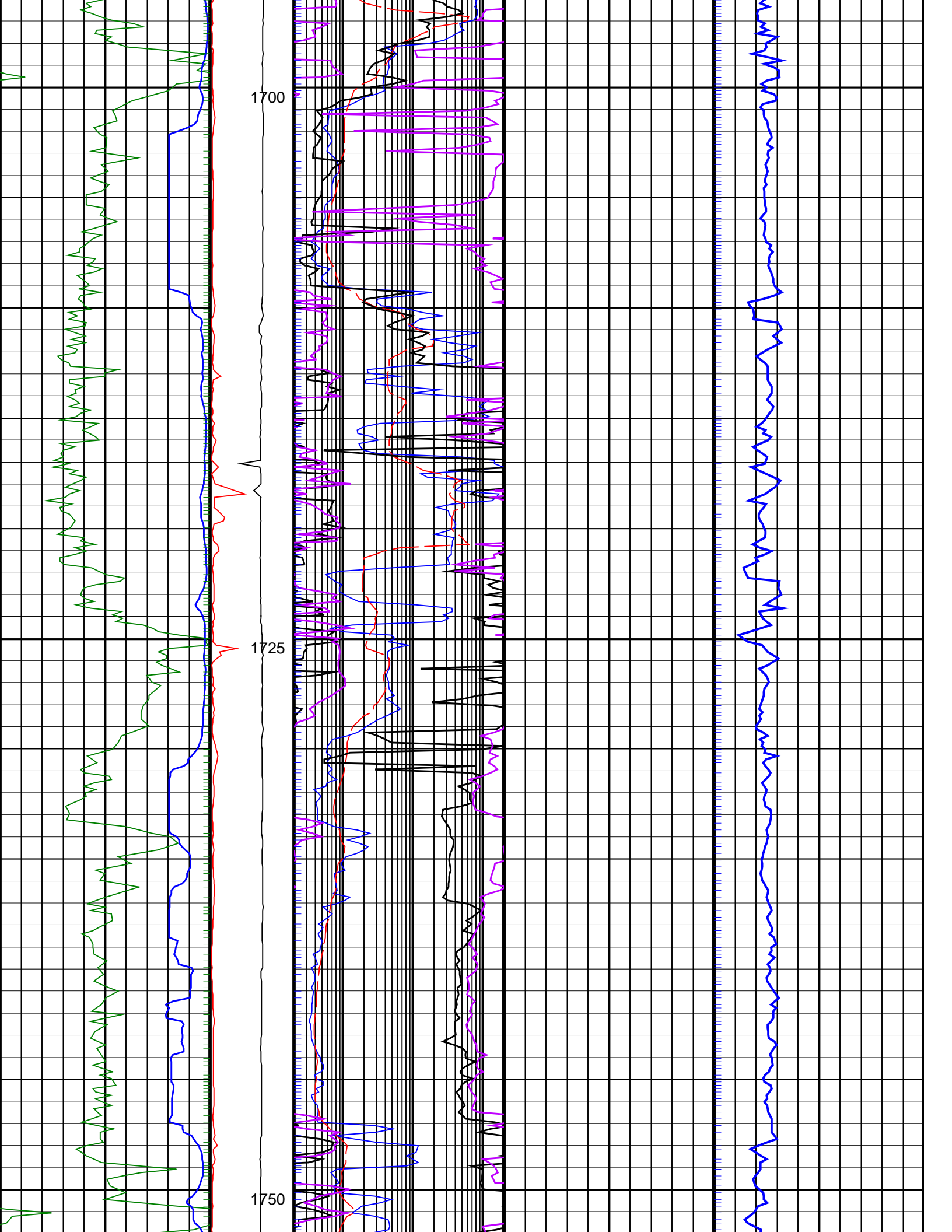


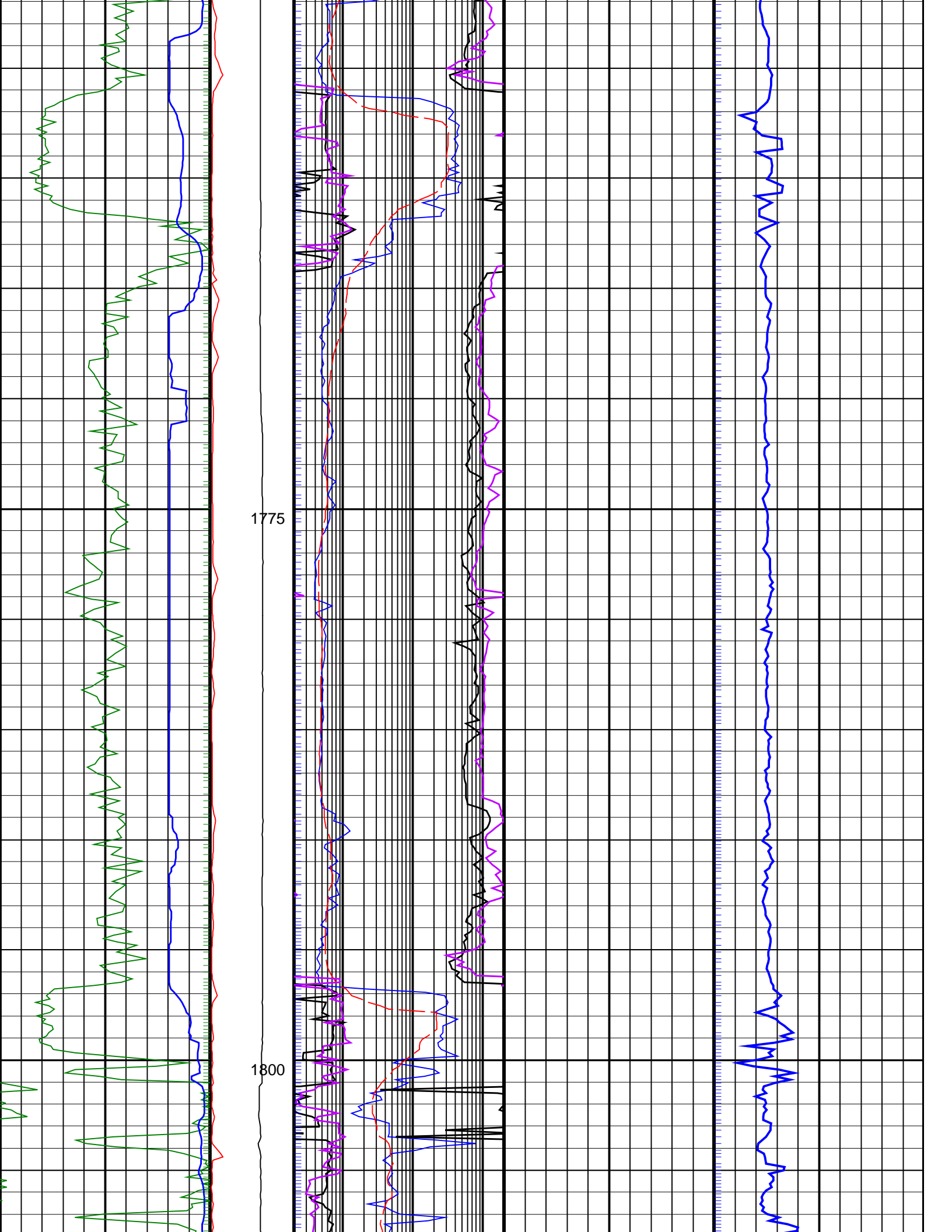


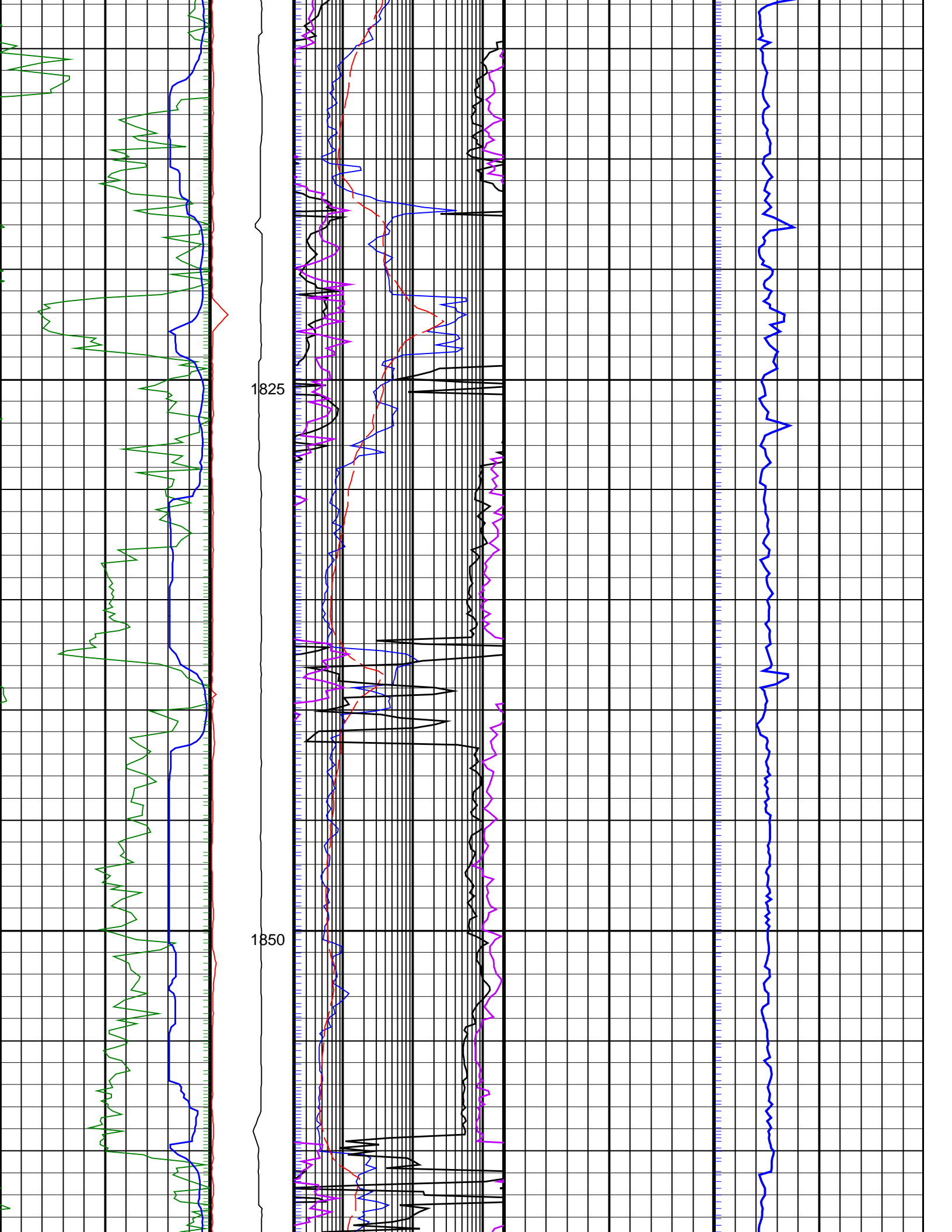


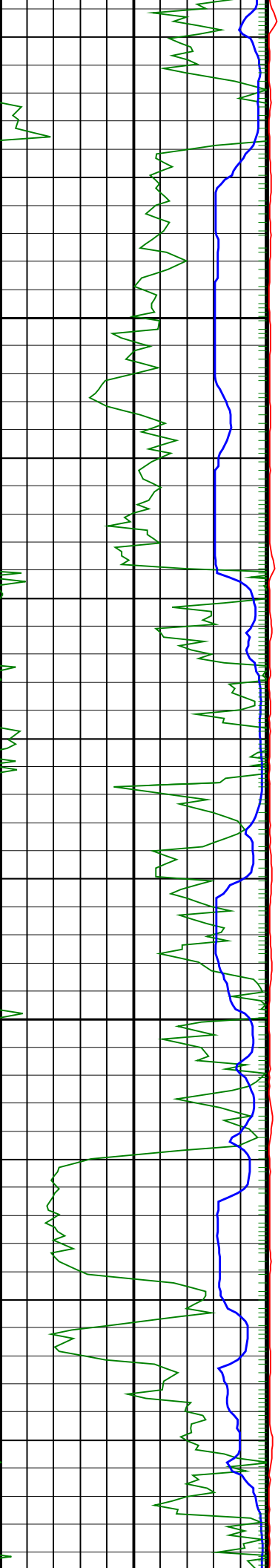






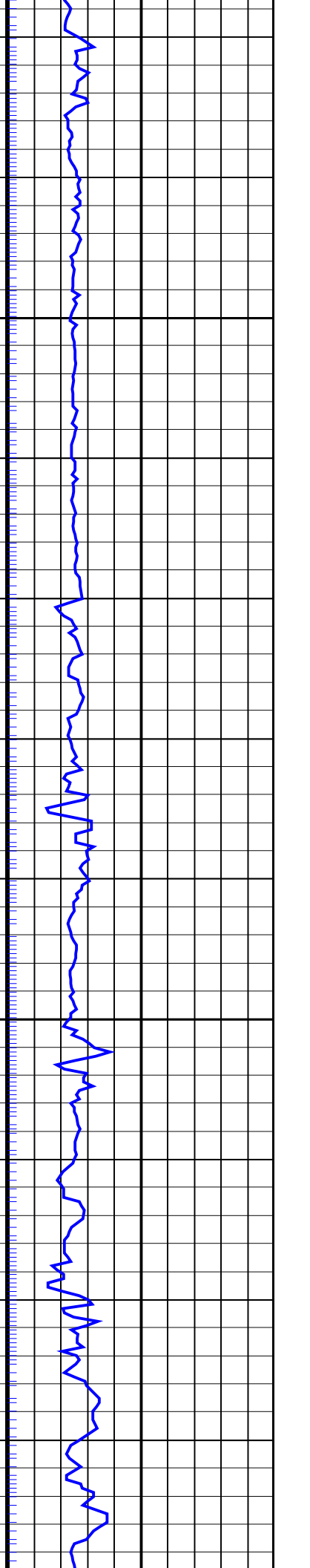
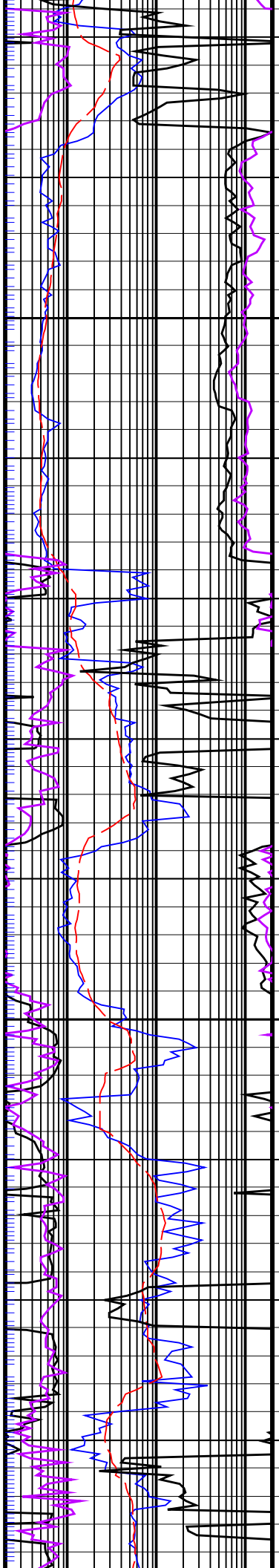


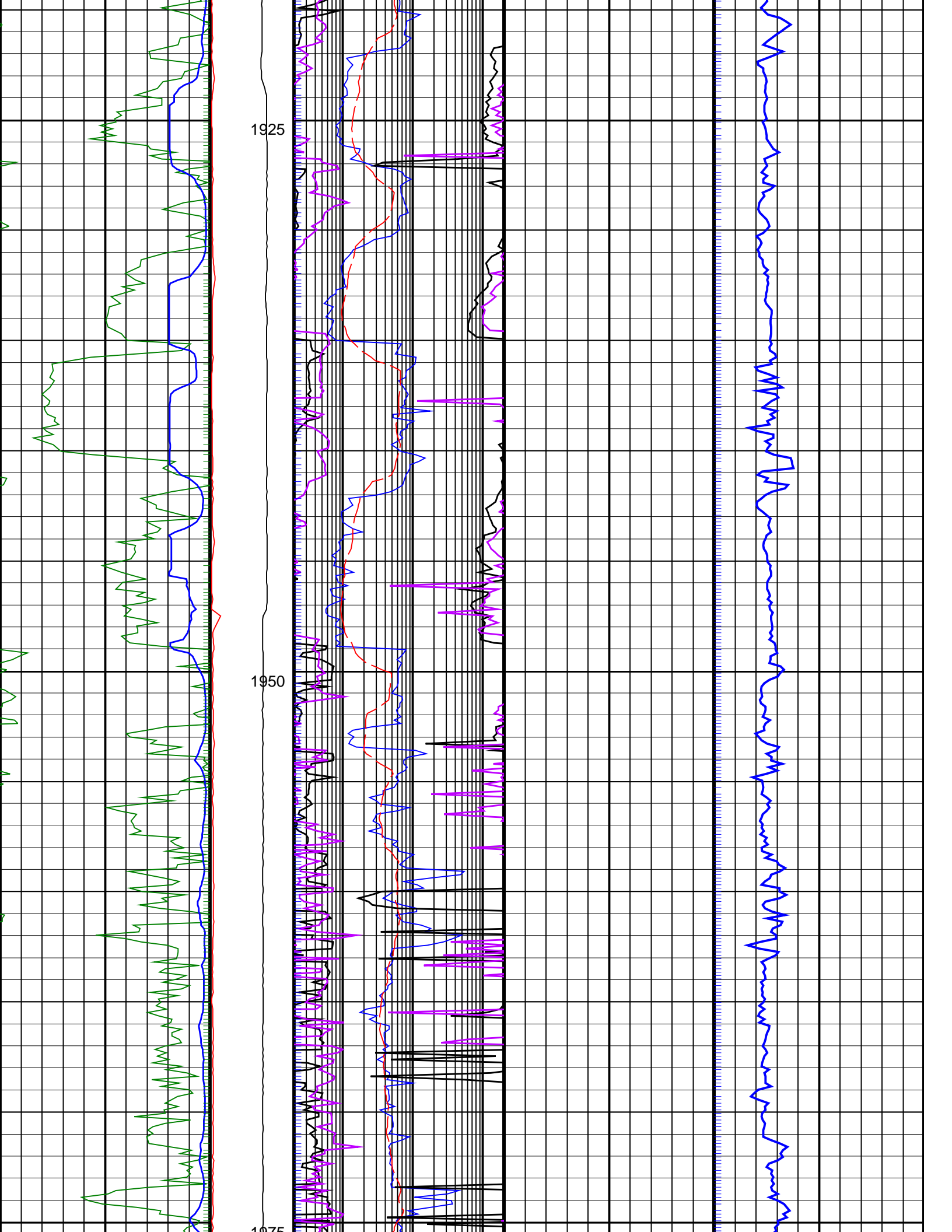


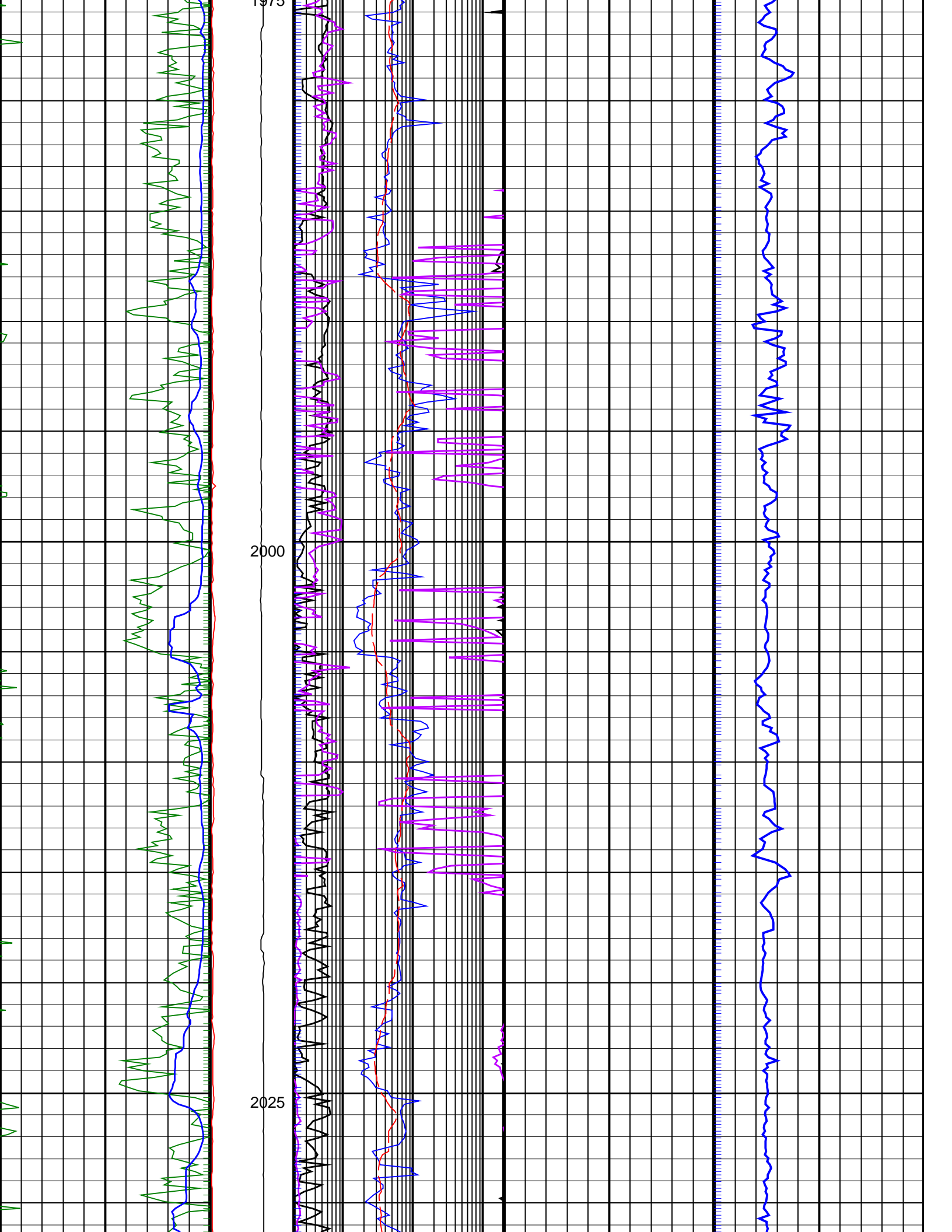


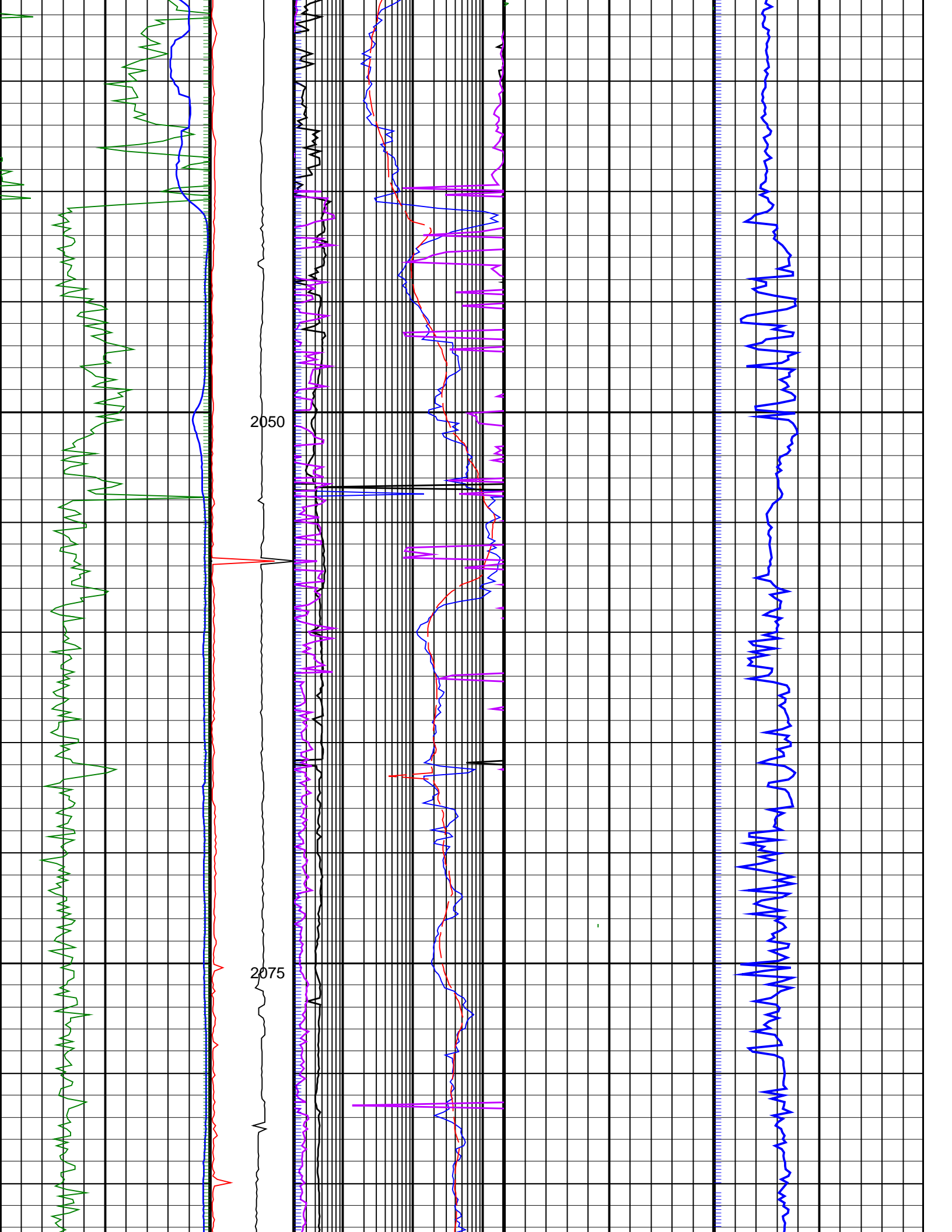
1875

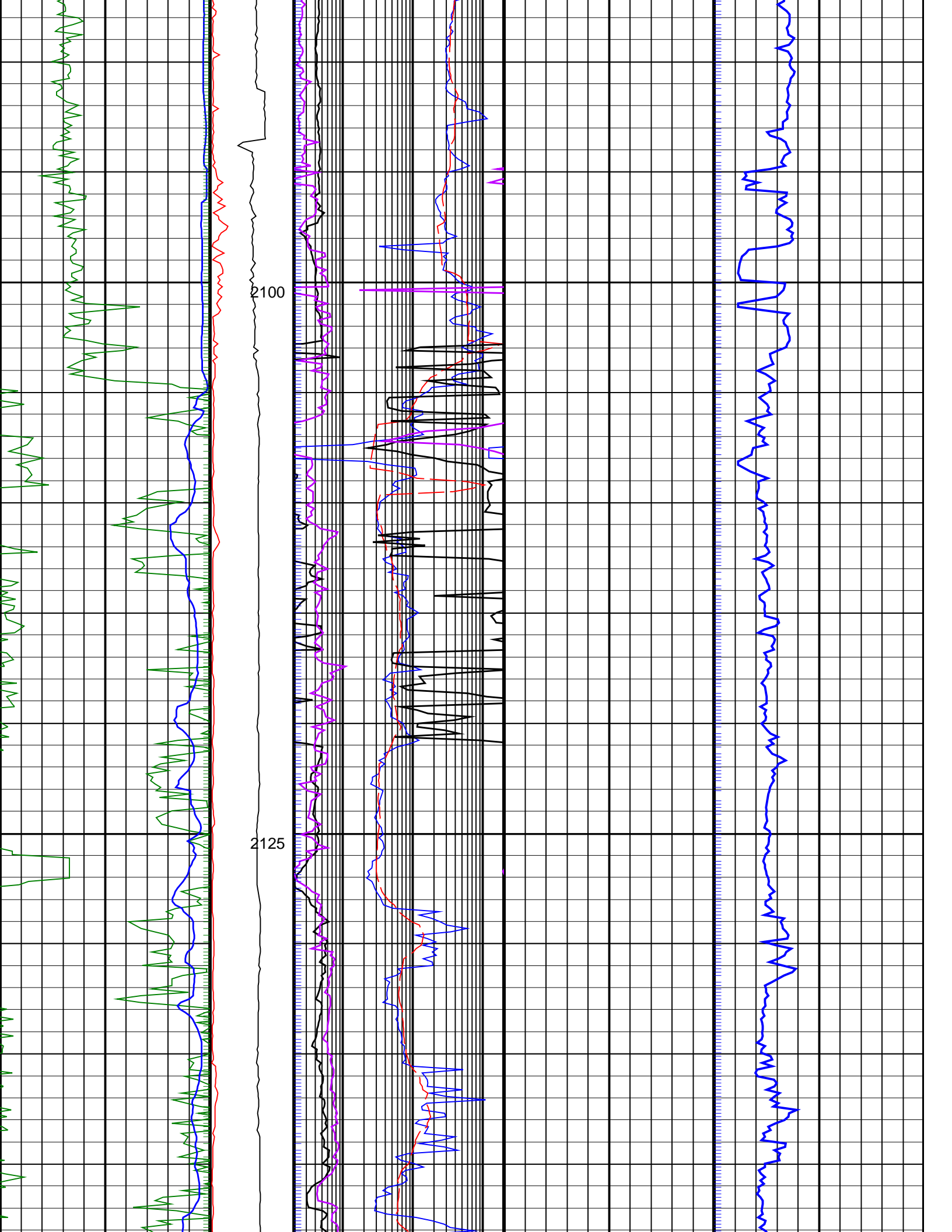
1900

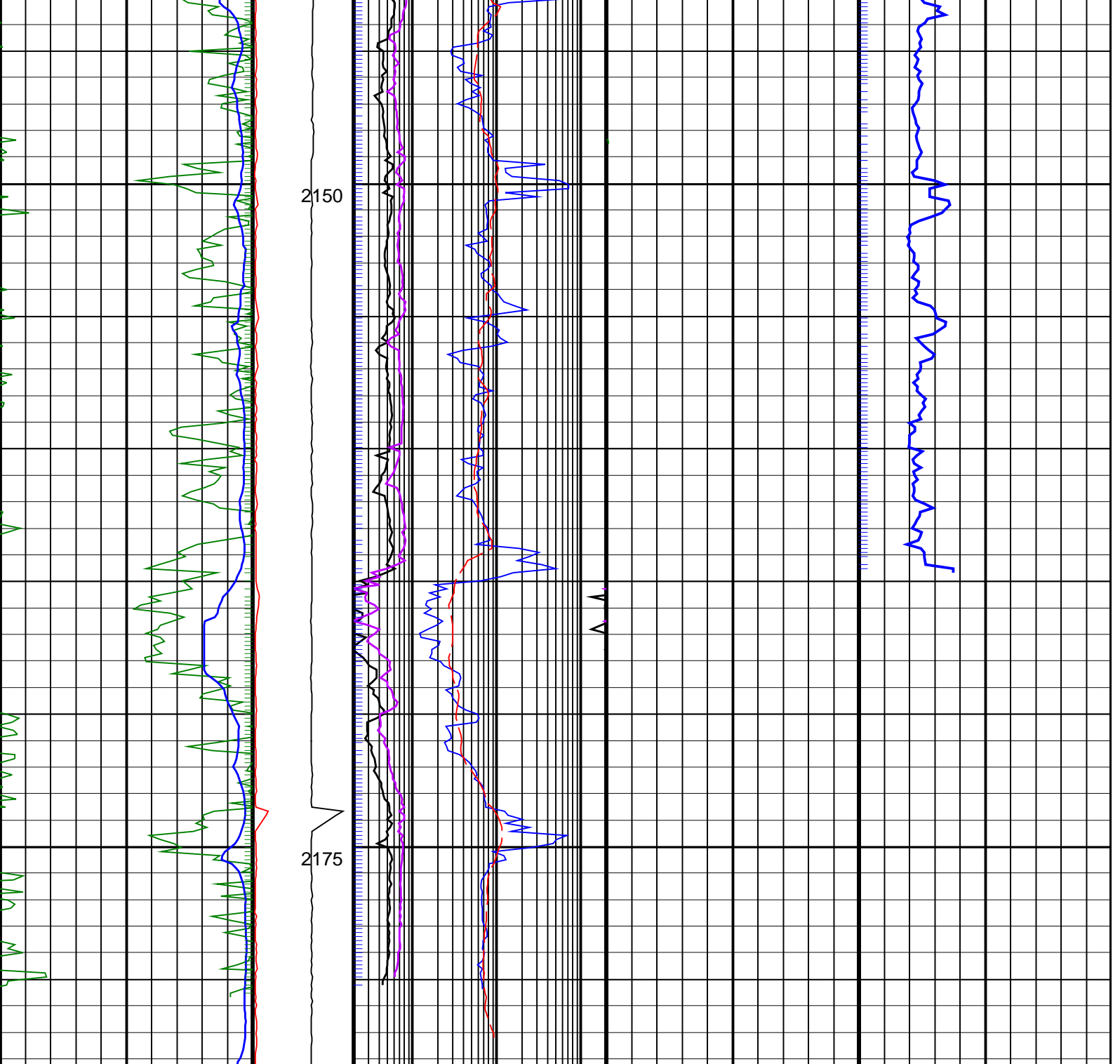












<p>ROP*5 (ROP5) (M/HR)</p> <p>0</p>	<p>PKPK_RPM (Stick_RT) (RPM)</p> <p>0 500</p>	<p>Ring Resistivity, Real-Time (RES_RING_RT) (OHMM)</p> <p>0.2 200</p>	<p>Photoelectric Factor, Real-Time (PEF_ADN_RT) (----)</p> <p>10 40</p>	<p>Delta-T Compressional, Real-Time (DTCO_RT) (US/F)</p> <p>240</p>
<p>RAB Gamma Ray, Real-Time (GR_RAB_RT) (GAPI)</p> <p>0 200</p>	<p>MWD Collar RPM (CRPM_RT) (RPM)</p> <p>0 250</p>	<p>Bit Resistivity, Real-Time (RES_BIT_RT) (OHMM)</p> <p>0.2 200</p>		
		<p>Deep Button Resistivity, Real-Time (RES_BD_RT) (OHMM)</p> <p>0.2 200</p>		
		<p>Shallow Button Resistivity, Real-Time (RES_BS_RT) (OHMM)</p> <p>0.2 200</p>		

IDEAL Version: ID13_0C_14
IDF

ARC8A-AA

id13_0c_02